

Environmental Monitoring				ERZ Boundary Sensors			
GM	Location	CH4	CO2	GM	Location	CH4	CO2
GM002-08-28-31	Mains A Hdg 10-11ct	✓	✓	GM001-01-01	Mains B Hdg 7-8ct	✓	✓
GM002-08-32-35	Mains A-B Hdg 11ct	✓	✓	GM001-01-02	Mains C Hdg 7-8ct	✓	✓
GM002-08-36-39	Mains A Hdg 11-12ct	✓	✓	GM001-01-03	Mains D Hdg 7-8ct	✓	✓
GM002-08-12-15	Mains F Hdg 11-12ct	✓	✓	GM001-01-04	Mains E Hdg 7-8ct	✓	✓
GM002-08-04	Mains E-F Hdg 31ct Fuel Bay	✓	✓	GM001-01-05	Mains F Hdg 7-8ct	✓	✓
GM002-06-16-19	Mains 31-32ct A Hdg	✓	✓	GM001-01-07	MG102 C Hdg 1-2ct	✓	✓
GM002-06-12-15	Mains F Hdg 30-31ct	✓	✓	GM001-01-08	Mains G - F Hdg 11ct	✓	✓
GM002-06-20-23	TG101 3ct B Hdg	✓	✓	GM001-01-09	Mains E-F Hdg 15ct Fuel Bay	✓	✓
GM001-05-27	MG105 12ct Fuel Bay CO	✓	✓	GM001-02-05	105 X-Drive	✓	✓
GM002-07-05	TG104 35-36ct B Hdg	✓	✓	GM001-03-01	Mains B Hdg 25-26ct	✓	✓
GM002-07-34-37	TG104 3-4ct B Hdg	✓	✓	GM001-03-02	Mains C Hdg 25-26ct	✓	✓
GM001-02-35-38	MG104 37-38ct B Hdg	✓	✓	GM001-03-03	Mains D Hdg 25-26ct	✓	✓
GM002-06-05-08	LW104 X-Drive Chute 2	✓	✓	GM001-03-04	Mains E Hdg 25-26ct	✓	✓
GM002-06-29-32	MG104 X-Drive Dogleg	✓	✓	GM001-04-01	Mains B Hdg 33-34ct	✓	✓
GM001-02-35-38	MG104 B Hdg 38-39ct	✓	✓	GM001-04-02	Mains C Hdg 33-34ct	✓	✓
GM002-06-33-36	MG105 X-Drive Dogleg	✓	✓	GM001-04-03	Mains D Hdg 33-34ct	✓	✓
GM001-03-37-40	Mains A Hdg / MG104 Dogleg Return	✓	✓	GM001-04-04	Mains E Hdg 33-34ct	✓	✓
GM002-06-01-04	MG106 X-Drive MG end	✓	✓	GM001-05-03	Mains D Hdg 29-30ct	✓	✓
GM002-06-05-08	23ct A Hdg to MG104 X-Drive	✓	✓	GM001-05-01	Mains B Hdg 29-30ct	✓	✓
GM002-06-39-42	LW104 X-Drive Chute 2	✓	✓	GM001-05-02	Mains C Hdg 29-30ct	✓	✓
				GM001-05-04	Mains E Hdg 29-30ct	✓	✓
				GM001-03-07	MG103 B-C Hdg 1ct	✓	✓
				GM001-03-08	MG103 C Hdg 1-2ct	✓	✓
				GM001-03-09	MG103 B Hdg 1ct	✓	✓
				GM001-03-06	MG104 X-Drive	✓	✓
				GM001-03-05	MG104 B Hdg 1-2ct	✓	✓
				GM001-02-10	MG104 B Hdg 34-35ct	✓	✓
				GM001-05-06	MG105 C Hdg 1-2ct	✓	✓
				GM001-05-05	MG105 B Hdg 1-2ct	✓	✓
				GM001-05-09	MG105 B Hdg 19-20ct	✓	✓
				GM001-05-07	LW106 X-Drive	✓	✓
				GM001-04-06	MG106 C Hdg 1-2ct	✓	✓
				GM001-04-05	MG106 B Hdg 1-2ct	✓	✓

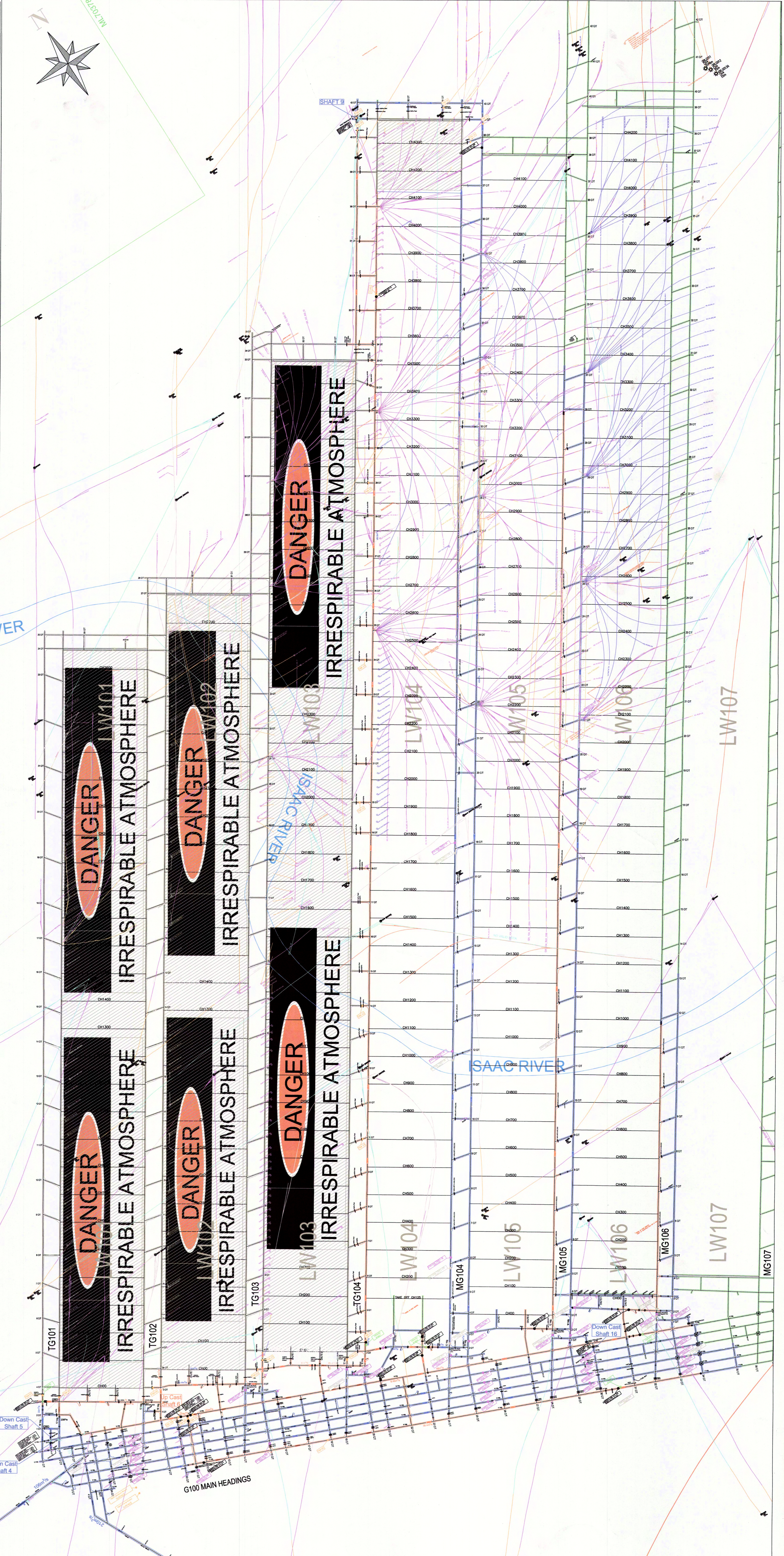
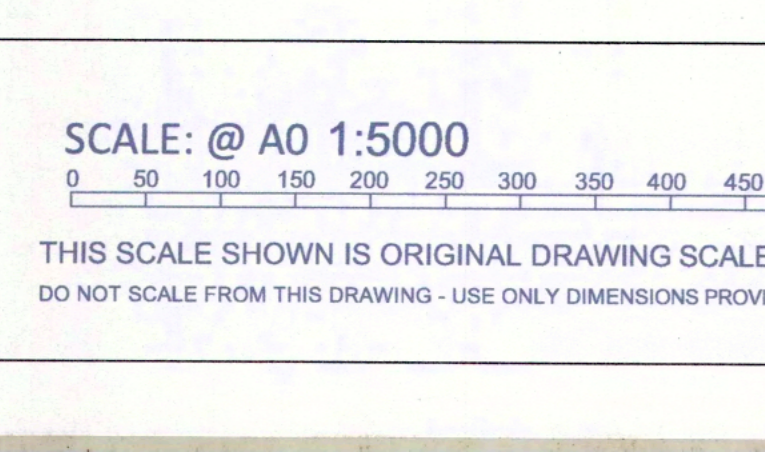
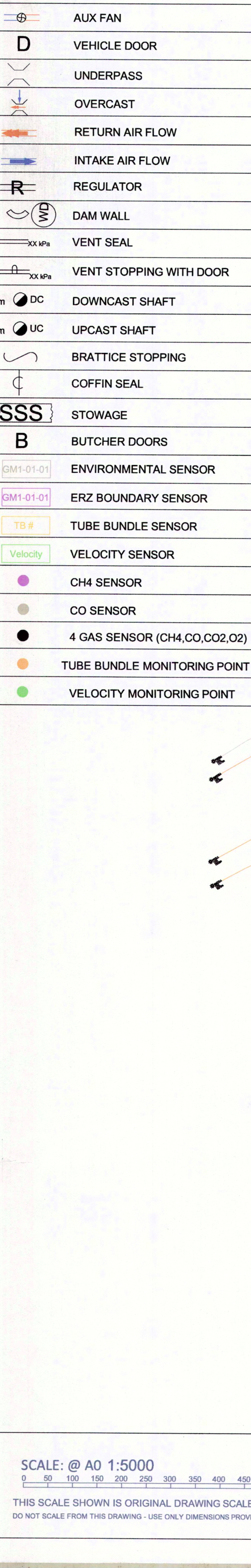
Conveyor Monitoring Systems			
CVU	Location	CH4	CO2
CVU104	MG104 C Hdg 2ct X-Drive (CVS3)	✓	✓
CVU001 BE	Mains D Hdg 5ct	✓	✓
CVU002 DH	Mains D Hdg 7 ct	✓	✓
CVU002 BE	Mains D Hdg 33-34 ct	✓	✓
CVU103 BE	MG103 C Hdg 1ct - A Hdg	✓	✓
MG104 PLC	MG104 C Hdg 1-2 ct	✓	✓
MG104 IMAC	MG104 C Hdg 2-3ct	✓	✓
CVU104 TRIP1 OB	MG104 C Hdg 6ct Inbye	✓	✓
CVU104 TRIP1 IB	MG104 C Hdg 6ct Outbye	✓	✓
CVU104 TRIP2 OB	MG104 C Hdg 12ct Inbye	✓	✓
CVU104 TRIP2 IB	MG104 C Hdg 12ct Outbye	✓	✓
CVU104 TRIP3 OB	MG104 C Hdg 18ct Inbye	✓	✓
CVU104 TRIP3 IB	MG104 C Hdg 18ct Outbye	✓	✓
CVU106	MG106 Outbye Coffin Seal (RT#89)	✓	✓
CVT106	MG106 Inbye Coffin Seal (RT#89)	✓	✓
GM002-07-08	MG105 Outbye Coffin Seal (RT#80)	✓	✓
MG015 IMAC	MG105 Inbye Coffin Seal C Hdg 2-3ct (RT#87)	✓	✓

Electrical Protection Sensors			
GM	Location	CH4	CO2
GM001-05-10	MG105 21ct B Hdg (Inbye UIS Drilling)	✓	✓
GM001-02-07	MG104 B Hdg 35-36ct (Inbye UIS Drilling)	✓	✓
GM001-05-08	MG105 B Hdg 25-26ct (Inbye UIS Drilling)	✓	✓

Air Velocity Monitoring Stations			
GM	Location	CH4	CO2
GM2002-06-24-AV	TG101 B Hdg 3ct (RT#55)	✓	✓
GM2002-06-25-AV	Mains A Hdg 31-32ct (RT#54)	✓	✓
GM2002-06-26-AV	Mains F Hdg 30-31ct (RT#51)	✓	✓
GM2002-06-37-AV	MG104 X-Drive - Chute Road #2 (RT#64)	✓	✓
GM2002-06-38-AV	MG105 X-Drive - Dog Leg (RT#65)	✓	✓

Differential Pressure Sensors			
GM	Location	CH4	CO2
GM002-06-27-DP	MG104	✓	✓
GM002-06-28-DP	MG105	✓	✓

Tube Bundle Monitoring Stations			
TB#	Location	CH4	CO2
TB#01	Mains A Hdg 11-12 ct Return GB (Dark Blue)	✓	✓
TB#02	MG102 3 ct Seal (Tan)	✓	✓
TB#04	MG101 3 ct Seal (Green/Dark Brown)	✓	✓
TB#05	Mains F Hdg 18ct Return GB (Yellow)	✓	✓
TB#06	LW101 C Hdg 3-4ct Seal (White)	✓	✓
TB#07	TG 101 B Hdg Seal 3-4ct (Green)	✓	✓
TB#09	Mains 11ct A-B Hdg Return GB (Blue)	✓	✓
TB#10	Mains A Hdg 10-11ct Return GB (Light Blue)	✓	✓
TB#22	TG104 35-36ct B Hdg GB (Black)	✓	✓
TB#12	MG103 14 ct Seal (White)	✓	✓
TB#13	MG103 24ct Seal (Light Brown)	✓	✓
TB#15	MG103 29ct Seal (Light Blue)	✓	✓
TB#19	MG103 10ct Seal (Grey)	✓	✓
TB#20	MG103 20ct Seal (Dark Brown)	✓	✓
TB#23	MG103 2-3ct C Hdg Seal (Pink)	✓	✓
TB#25	TG103 B Hdg 3-4ct Final Seal (Purple)	✓	✓
TB#26	TG104 3-4ct B Hdg	✓	✓
TB#36	MG104 38ct Seal	✓	✓
TB#37	MG104 38-39ct B Hdg GB (Pink)	✓	✓
TB#38	FL104 B1ct	✓	✓
TB#39	TG104 40-41ct C Hdg	✓	✓
TB#40	MG103 EOP Shaft GB (Purple)	✓	✓
TB#41	Analysier Room Surface	✓	✓
TB#42	Pump Room Surface	✓	✓



CONTROLLED DISTRIBUTION		DRAWING CHECKS AND AUTHORISATIONS			
SIZE	LOCATION	NAME	CHECKED	AUTHORISED	DATE
1 AD	GM MEETING ROOM (MT)	MARK JONICHA	✓	✓	15/04/20
1 AD	CONTROL ROOM	WOUTER NEUWIS	✓	✓	15/04/20
1 AD	MUSTER AREA	NA	✓	✓	
1 AD	MINES RESCUE	NA	✓	✓	
NA	NA	NA	✓	✓	
NA	NA	NA	✓	✓	
NA	NA	NA	✓	✓	
NA	NA	NA	✓	✓	

AngloAmerican Grosvenor Mine
VENTILATION PLAN
 DRAWN BY: WJH/DCS DATE: 15/04/20 SHEET: 1 OF 1
 DRAWING NUMBER: 25001 DATE: 15/04/20 SCALE: 1:5000
 XREFS: 10001, 10006, 25003